

PLAN OF TOPOGRAPHIC DETAIL OF  
79 HENDERSON ST, PORT HOPE, ON  
COUNTY OF NORTHUMBERLAND



BLOCK 1  
REGISTERED PLAN 39M-884  
PIN 51065-0125

METRIC

DISTANCES AND COORDINATES SHOWN ON THIS PLAN ARE IN METRES AND CAN BE CONVERTED TO FEET BY DIVIDING BY 0.3048.

"CAUTION"

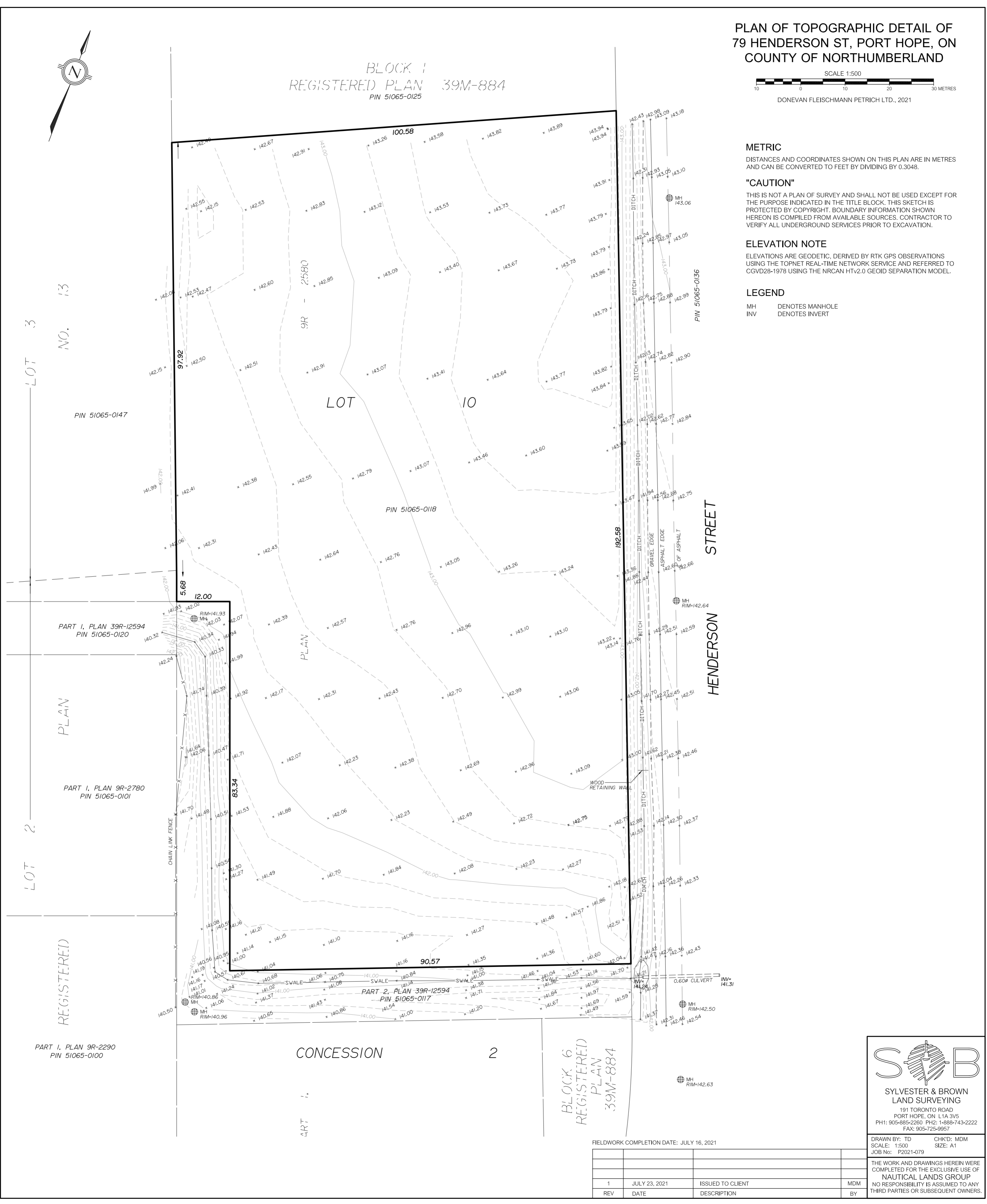
THIS IS NOT A PLAN OF SURVEY AND SHALL NOT BE USED EXCEPT FOR THE PURPOSE INDICATED IN THE TITLE BLOCK. THIS SKETCH IS PROTECTED BY COPYRIGHT. BOUNDARY INFORMATION SHOWN HEREON IS COMPILED FROM AVAILABLE SOURCES. CONTRACTOR TO VERIFY ALL UNDERGROUND SERVICES PRIOR TO EXCAVATION.

ELEVATION NOTE

ELEVATIONS ARE GEODETIC, DERIVED BY RTK GPS OBSERVATIONS USING THE TOPNET REAL-TIME NETWORK SERVICE AND REFERRED TO CGVD28-1978 USING THE NRCAN HTv2.0 GEOID SEPARATION MODEL.

LEGEND

MH DENOTES MANHOLE  
INV DENOTES INVERT



**SYLVESTER & BROWN**  
LAND SURVEYING  
191 TORONTO ROAD  
PORT HOPE, ON L1A 3V5  
PH1: 905-885-2260 PH2: 1-888-743-2222  
FAX: 905-725-9957

DRAWN BY: TD	CHK'D: MDM
SCALE: 1:500	SIZE: A1
JOB No: P2021-079	
THE WORK AND DRAWINGS HEREIN WERE COMPLETED FOR THE EXCLUSIVE USE OF NAUTICAL LANDS GROUP. NO RESPONSIBILITY IS ASSUMED TO ANY THIRD PARTIES OR SUBSEQUENT OWNERS.	

FIELDWORK COMPLETION DATE: JULY 16, 2021

REV	DATE	DESCRIPTION	BY
1	JULY 23, 2021	ISSUED TO CLIENT	MDM